

# Gericke

Powder Processing Equipment & Systems



Foodstuffs, Pet Food, Animal Feeds, Chemicals, Pharmaceuticals, Cosmetics, Detergents, Insulating & Construction Material, Minerals, Agrochemicals, Dyestuff, Plastics.

## Integrated systems for powder and dry solids handling and processing.

Gericke offer a complete single-source facility: Consultation, project planning and management. Plant and equipment supply. Installation, commissioning and after-sales service.

# Efficiency. From raw material receipt.

**G**ericke establish the highest standards from the very first stage of the production process. At the initial reception of incoming raw materials every emphasis is placed on dust free and gentle discharge of the bulk solids prior to further processing.

Raw materials can be received in:

- Bags ■ Drums ■ Big bags
- Containers ■ Bulk containers
- Tankers



*Containerised chemical products being discharged via dense phase conveyors.*

*Muesli ingredients are discharged from big bags into a continuous feeding/mixing line.*

*Ingredients for vitamin production are discharged directly from a bulk container into storage silos.*

*Sack tipping of raw materials for vitamin production.*



# Economy. With simplified operational logistics.

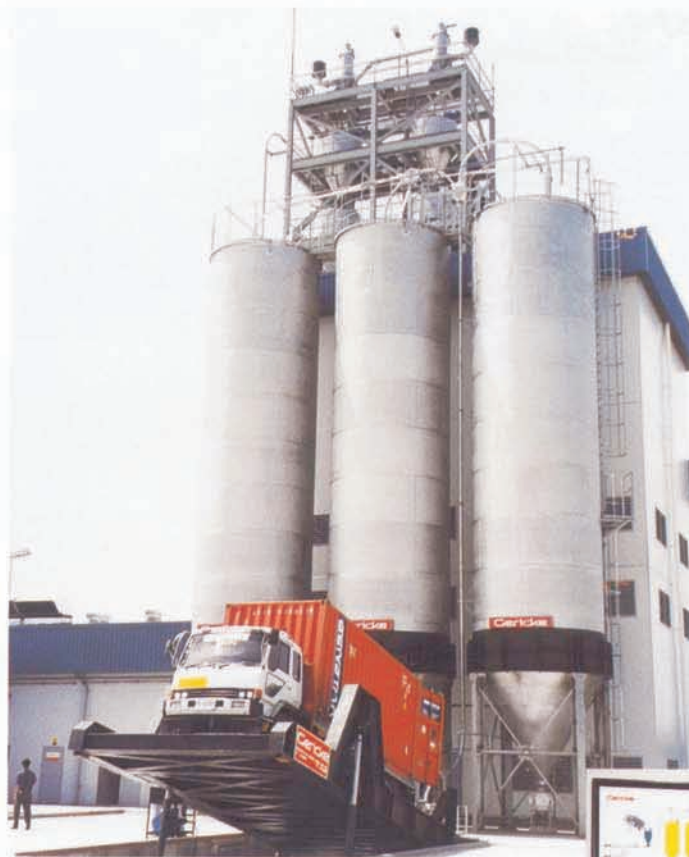
In today's complex processing systems, the efficient handling of bulk materials and sound logistical planning have a major influence on operational economy.

**Gericke technology makes sure that all system elements are correctly designed and delivered on schedule in perfect condition.**

- Silo storage and discharge systems tailored to match the raw material characteristics
- Pneumatic dense phase and lean phase conveying in both pressure and vacuum systems
- Removal of contaminants by sifting, metal detection and separation
- Deagglomeration of lumps in the Nibbler



*This chemical production dense phase conveyor incorporates weighing and recording of the throughput.*



*Computerised control of a silo plant*



*Above: Pneumatic loading of silos from a tipping bulk road container for Nylon Production.*



*Left: Container discharge and check-sieving during transfer of pharmaceutical active ingredients.*



*Right: Silo discharge and conveying of granulated sugar.*

# Integration.

## A production line incorporating batch mixing.

**B**ecause mixing accuracy is essential, Gericke have made integrated mixing systems a central part of their project management service. Precise weighing of the ingredients, efficient feeding technology, plus tried and tested computer based control and recording systems, ensure effective and gentle processing to meet the most critical recipe-mix requirements.

*Mixing process with Gencke multiflux batch mixers for agrochemical production*

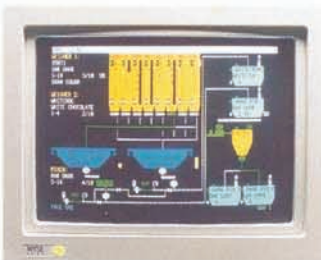


*Ingredient-feeding for detergent production with weigh vessel and receiving stations for FIBC big bag discharge*



*Ploughshare mixer plant for the pre-mix of confectionery ingredients*

- Conveying
- Feeding
- Mixing
- Conditioning
- Pneumatic dense phase and lean phase conveying in pressure and vacuum systems
- Optimised mixing processes ensure consistent high quality
- Size reduction
- Weighing
- Sieving



*Computerised control of a mixing and formulation plant*



# Accuracy. Continuous feeding and mixing systems.



Continuous feeding and mixing system into an extruder for the production of plastic tubes. System includes weighfeeders and continuous mixers for 8 ingredients.

Feeding and mixing system for the preparation of muesli. Ingredients are transferred from the weigh feeder by an enclosed belt conveyor to the continuous mixer.

**P**recise control of the continuous feeding process is the key to effective quality management.

Today, Gericke's advanced feeding and system controls, linked to mixers which have been carefully selected to match the production requirements, ensure consistent and accurate quality control. Continuous feeding and mixing systems offer the user many advantages:

- Gentle product handling
- Consistent and stable homogeneity of the product mix
- Suitable for most solids with liquid additions
- Easily cleaned compact units
- Minimised risk of separation



Chemical feed to reaction vessel by a Gericke loss-in-weight feeder.

# Success. Specialised solutions for bulk solids processing.



The Gericke checklists define the customer's process needs.

Trials in the Gericke test laboratory help define and confirm requirements.

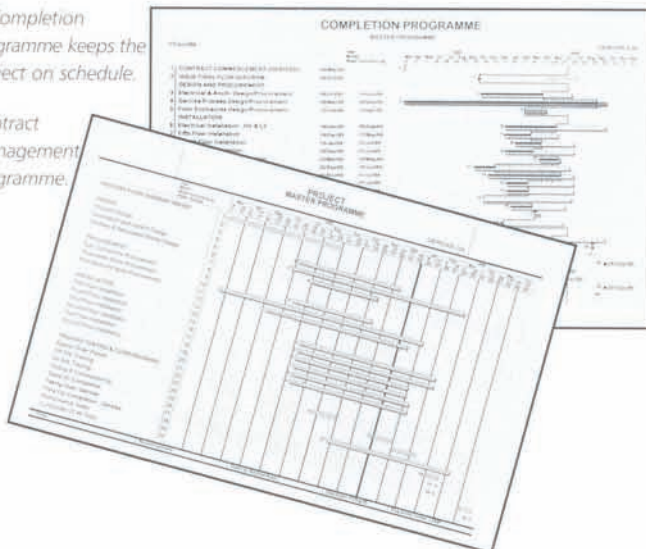


This Ploughshare mixer has a removable rotor blade for easy cleaning



A Completion Programme keeps the project on schedule.

Contract Management Programme.



**M**aking an investment in your bulk solids processing plant, is like any other financial commitment. You need to minimise the risk. Gericke's highly qualified staff with many years of experience, ensure that nothing is left to chance.

- Operational efficiency and economy
- Reliable project co-ordination service
- Internationally acclaimed products
- Highest operator-safety standards
- Easy to use and simple maintenance

The key to Gericke's success is the remarkable effort that goes into identifying the customer's needs. This, together with the unique Gericke experience of process solutions on a worldwide scale ensures that every system is individually tailored to match the customer's production and economic requirements.

From the first planning meeting, through all the project management stages: the design, engineering, installation and commissioning, Gericke never lose sight of the customer's requirements or expectations.

# Reliability. Quality and safety are standard features.

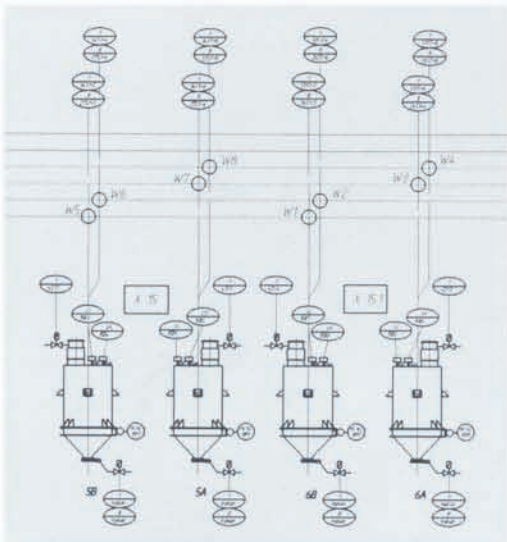
Every stage of the Gericke service: sales, design, engineering and production conforms to EN ISO 9001.



**B**y having all products and services assessed and approved to the International Quality Standard EN ISO 9001, Gericke have confirmed their ability to produce to the highest quality which offers a number of benefits to our customers.



- Control and process management
- Process simulation for zero defect software programming
- Industrial scale tests in the test laboratory
- Approved documentation for commissioning, service and maintenance to EN 392 standards
- Intensive training facilities
- System startup and commissioning
- Worldwide parts and spares service



Process and instrumentation drawing

Comprehensive plant documentation

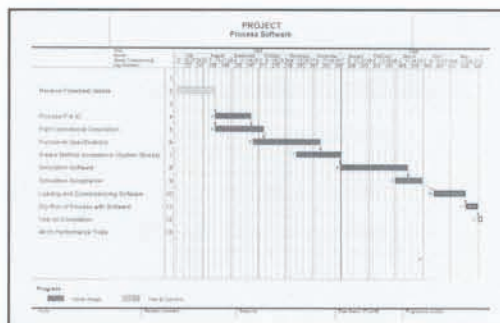


Special safety specifications and standards can be met.

**EEEx d IIB T3**

- Explosion protection methods include venting and inert gas suppression
- Explosion proof constructions
- Explosion prevention using Nitrogen gases for conveying and processing

Project planning for process software programming



# Gericke.

## International specialists in conveying, feeding, mixing and system engineering.

---

**T**he Gericke service is fully comprehensive and is underwritten by over 100 years of specialist experience in bulk solids handling system engineering. This impressive background, together with the unique Gericke design and manufacturing facilities, is your guarantee of total satisfaction from the first consultation to final installation, commissioning and on-going after sales support.

- Initial concepts tailored to meet your requirements
- Comprehensive project management
- Design and engineering of complete systems
- Installation, on-site supervision, commissioning and training
- Worldwide after sales and parts service

'Made by Gericke' has become an international watchword for quality, value and satisfaction. Yet with its sights still firmly on the future, the company's mission remains to provide innovative solutions for satisfied and successful customers.

For more information or trials, contact your local Gericke specialist.



Switzerland. Gericke AG  
Regensdorf, Zurich.  
Established in 1894.



Germany. Gericke GmbH  
Rielasingen.



France. Gericke SA  
Argenteuil, Paris.



Great Britain. Gericke Ltd  
Ashton-under-Lyne, Mic.



Singapore. Gericke Pte Ltd  
Singapore.



Netherlands. Gericke BV  
Hoevelaken.



### Powder Processing Equipment and Systems

**Gericke Limited** Victoria House, Cavendish Street,  
Ashton-under-Lyne, Lancashire OL6 7DJ.  
Telephone: 0161-344 1140. Fax: 0161-308 3403.

**Gericke Pte Limited** 436 Tagore Avenue, Singapore 2678.  
Telephone: 0065 4528133. Fax: 0065 4520392.

CH-8105 Regensdorf  
NL-3870 Hoevelaken

D-78239 Rielasingen  
F-95100 Argenteuil