

VERSATILE CONTROLLER FOR PNEUMATIC DENSE PHASE CONVEYING STP 61

Gericke developed the STP 61 controller for the gentle and economical dense phase conveying. The controller can be used for single sender operation or for continuous conveying systems with double sender operation. It is also designed to control conveying systems with additional external air injection (PulseLine™).



Area of application

Dense phase conveying systems

- PHF: Thrust conveyor
- PTA: Plug conveyor
- PTA PL: Plug conveyor with PulseLine™

Advantages

- Designed for all Gericke dense phase conveying systems
- Cost saving thanks to ready to use solution
- Short start up time
- Intuitive operation
- Easy configuration of the conveying system
- Comprehensive range of status and process information – also available online
- Support possible with remote diagnostic
- High reliability and plant availability
- Minimises the air consumption

SPECIFICATIONS

Function

- The STP 61 controller is able to operate a conveying system as a standalone controller or embedded in a plant control system.
- A colour touch screen allows the command input. Configuration, operation mode and operation level are displayed with clear graphics.
- Automatic or manual operation mode possible.
- PulseLine™ operation: Smart support of long distance conveying with bypass air injection.
- Two protected service levels offers ease of use and operation safety.
- 14 languages installed (inclusive Chinese).
- Alarm output, logging and confirmation.
- Data storage via USB for configuration, parameters, trending of pressure and events.
- Various communications interface to higher level control system.

Technical data

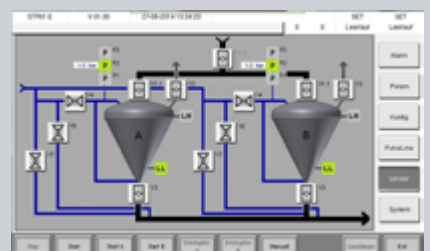
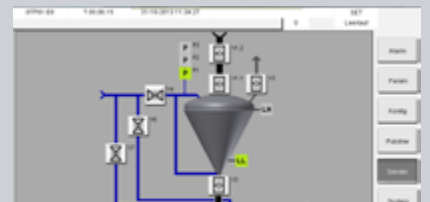
Panel	<ul style="list-style-type: none"> • 7" WVGA TFT display with touch screen • Operation temperature: 0 to +50° C • 24 VDC
ATEX	<ul style="list-style-type: none"> • For operation in save area. Controle of valves in ATEX zones is possible.

Housing

Type mild steel	<ul style="list-style-type: none"> • Wall housing in mild steel • Dimensions: 600x600x210 (HxWxD) • Surface: RAL 7035
Type stainless steel	<ul style="list-style-type: none"> • Wall housing in stainless steel with angular top • Dimensions: 600x600x210 (HxWxD) • Surface: 0.5 µm
Type integration	<ul style="list-style-type: none"> • Without housing • Hardware fixed on mounting plate, inclusive Panel

Hardware

Variante	Application
STP 61 B	Single sender
STP 61 C	Single sender with PulseLine™
STP 61 D	Double sender
STP 61 E	Double sender with Pulseline™



Switzerland

Gericke AG
T +41 44 871 36 36
gericke.ch@gerickegroup.com

Germany

Gericke GmbH
T +49 77 31 929 0
gericke.de@gerickegroup.com

France

Gericke SAS
T +33 1 39 98 29 29
gericke.fr@gerickegroup.com

United Kingdom

Gericke Ltd.
T +44 16 13 44 11 40
gericke.uk@gerickegroup.com

Netherlands

Gericke B.V.
T +31 332 54 21 00
gericke.nl@gerickegroup.com

USA

Gericke USA, Inc.
T +1 855 888 0088
gericke.us@gericke.net

Brazil

Gericke Brasil Ltda.
T +55 11 2598 2669
gericke.br@gerickegroup.com

Singapore

Gericke Pte Ltd.
T +65 64 52 81 33
gericke.sg@gerickegroup.com

China

Gericke (Shanghai) Pte Ltd.
T +86 21 3306 3395
gericke.cn@gerickegroup.com

Indonesia

Gericke Indonesia
T +62 21 2958 6753
gericke.id@gerickegroup.com

Thailand

Gericke Thailand
T +66 95 64 6161
gericke.th@gerickegroup.com

Malaysia

Gericke Malaysia
T +60 11 5167 8133
gericke.my@gerickegroup.com

For all other countries please contact Gericke AG Switzerland.

WWW.GERICKEGROUP.COM

Gericke