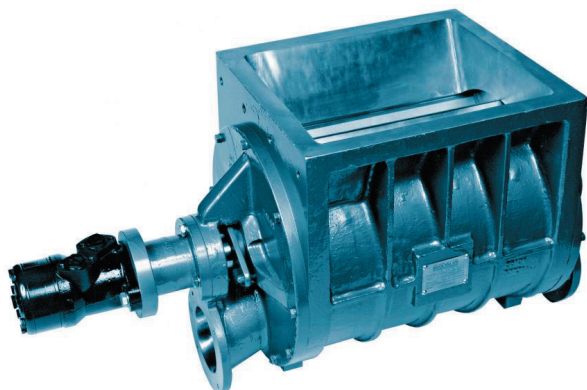




Blowing Seals for Vehicle Mounting

Capacities up to 40m³/hour

Made in Britain



www.rotaval.co.uk

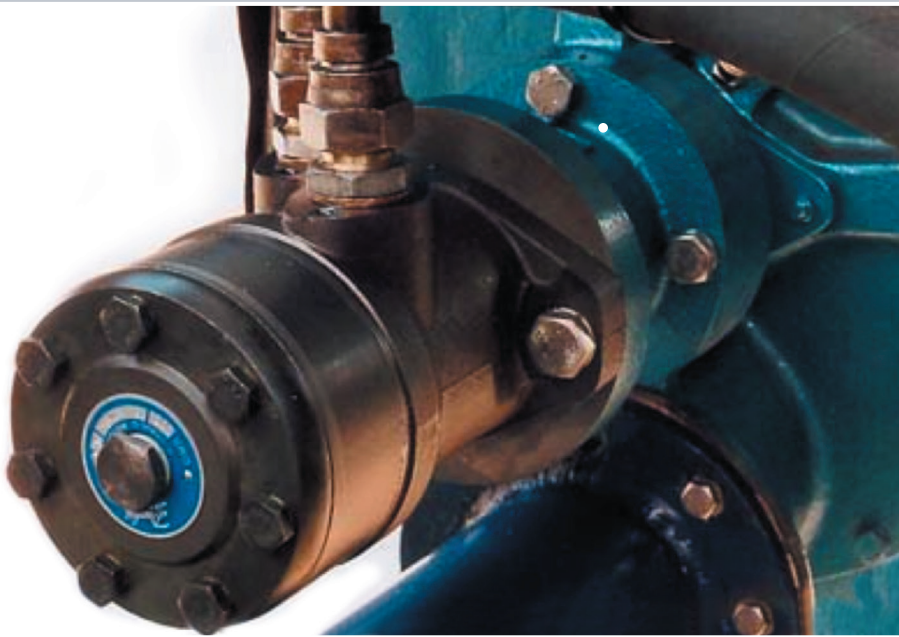
RotaVal

Keeping the World's Industries Solidly in Control

Blowing seals for ISO container discharging by either Vehicle Mounted or on-site arrangements

Movement of dry bulk product is increasingly being undertaken by utilising the International Standards Organisation shipping containers fitted with an inner liner and a false bulkhead. Due to the wide variety of product being shipped by this method and due to the differing discharge solutions that can be provided, inner liners can be manufactured from woven PP / PE, food-grade PE film, metalised polyester, aluminium foil and conductive film in cases where an explosion risk may be present. Whatever the material of construction of the inner liner, the false bulkhead is usually these days made from a combination of a strong woven PP or PE fabric and a number of horizontal steel bars, having moved away from the old wooden bulkheads of yesteryear.

Unloading/discharging can be by either a vehicle mounted 'on-board' solution or an 'on-site' solution. When adopting either method, safety and control are an important feature, due to the variation in the flow properties of a wide range of products and the fact that a container filled with possibly 26 tonnes of product is being discharged at a tipping angle of between 10-45 degrees throughout the complete process.



Rota Val BSV Blowing Seal 'On-board' vehicle mounted



Rota Val BSV Blowing Seal 'On-site' fixed installation

The Rota Val BSV Blowing Seal is a lightweight but robust unit that has been purpose-designed for mounting on bulk tipping trailers to provide an 'on-board' delivery solution by the delivery logistics provider.

The blowing seal is connected to the discharge of the liner via an assembly of a supporting tundish and frame fitted to the container at the discharge area of the liner, and a flexible hose connector to the blowing seal inlet. It is suited to discharging a wide range of bulk powders and granular solids into a pneumatic conveying line.

The valve is driven by a direct coupled in-line variable speed hydraulic motor powered by the vehicle's hydraulic system.

As an alternative to the BSV for 'on-site' solutions, our BSM Blowing seal valve could be used. Please see our website for details.



Rota Val Ltd., Bumpers Way,
Bumpers Farm Industrial Estate,
Chippenham, Wiltshire SN14 6LH

T: 00 (44) 1249 651138
F: 00 (44) 1249 462054
E: sales@rotaval.co.uk

Made in Britain



www.rotaval.co.uk

RotaVal

Keeping the World's Industries Solidly in Control